

RTC's National Trail Counting Initiative

Dr. Torsha Bhattacharya

torsha@railstotrails.org

Director of Research, Rails-to-Trails Conservancy

Mid-Atlantic Greenways and Trails Summit
05 April, 2019

National Trail Counter program

The screenshot displays the National Trail Counter program interface. At the top, there is a search bar with the text "Search By name, serial number, cellular number or comment". Below the search bar, there are three filter sections: "User Type", "Type", and "Tags".

User Type:

- Pedestrians (70)
- Cyclists (51)
- Pedestrians/Cyclists (48)
- Undefined (3)
- Cars (2)

Type:

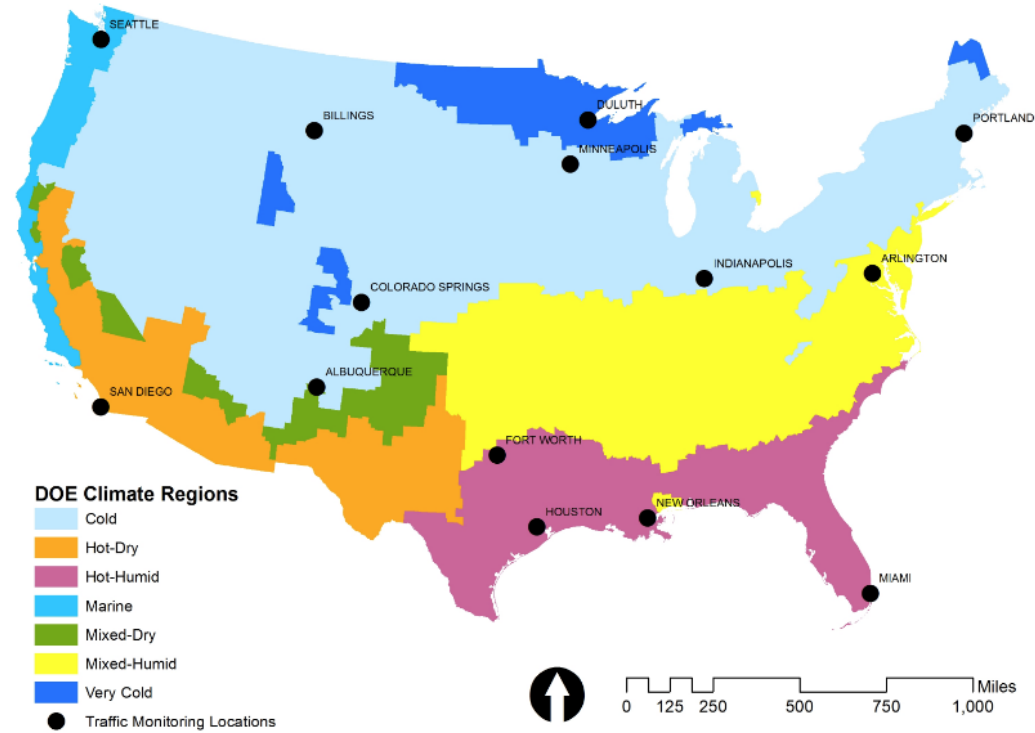
- Automatic Transmission (68)
- Manual Data Retrieval (5)

Tags:

- PA DCNR (21) ↑
- Arlington (11) ↑
- San Diego (7) ↑
- Seattle (5) ↑
- Washington DC (4) ↑
- Colorado Springs (4) ↑
- New Orleans (3) ↑
- Portland Trails (3) ↑
- Miami Dade MPO (2) ↑
- Indiana (2) ↑
- Mid-Region COG (2) ↑
- Houston (2) ↑
- NCTCOG (2) ↑
- City of Billings (2) ↑
- Minnesota (1) ↑

The main map shows the United States with various colored markers indicating trail counter locations. The markers are color-coded according to the filters. A sidebar on the left contains a list of filters, and a search bar is at the top. The map includes state names and major cities. A scale bar at the bottom right indicates 350 km. The footer contains copyright information: "©2008 Google" and "© 2017 Eco-Visio - A service provided by Eco-Counter® | Version: V4R1.14 | 15:55 (UTC -4) | Refresh".

Trail Traffic Calculator



Data Source: Department of Energy Building America Climate Zones
<http://energy.gov/eere/buildings/downloads/building-america-best-practices-series-volume-72-guide-determining-climate>

Region

Mode

Counts File No file chosen

Go Counter App for Trail Counting

Experience Trails

Build Trails

Policy

Our Work

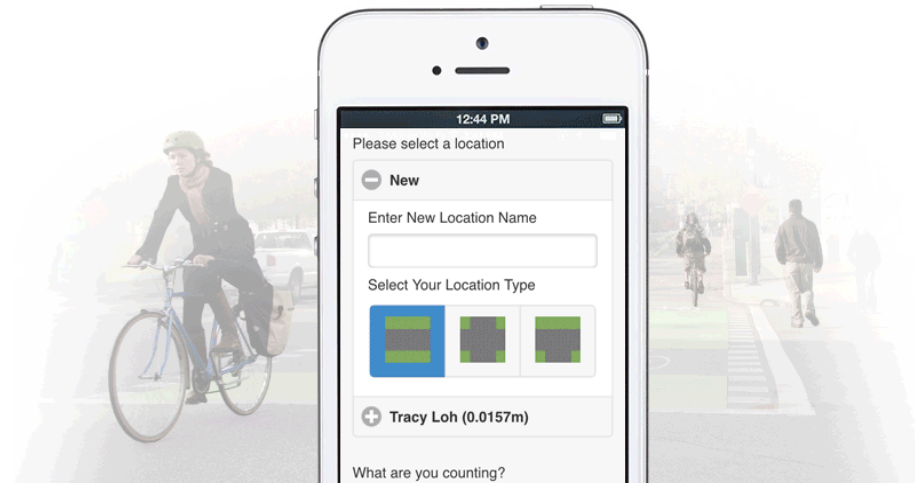
Take Action

Support Us

— INTRODUCING —

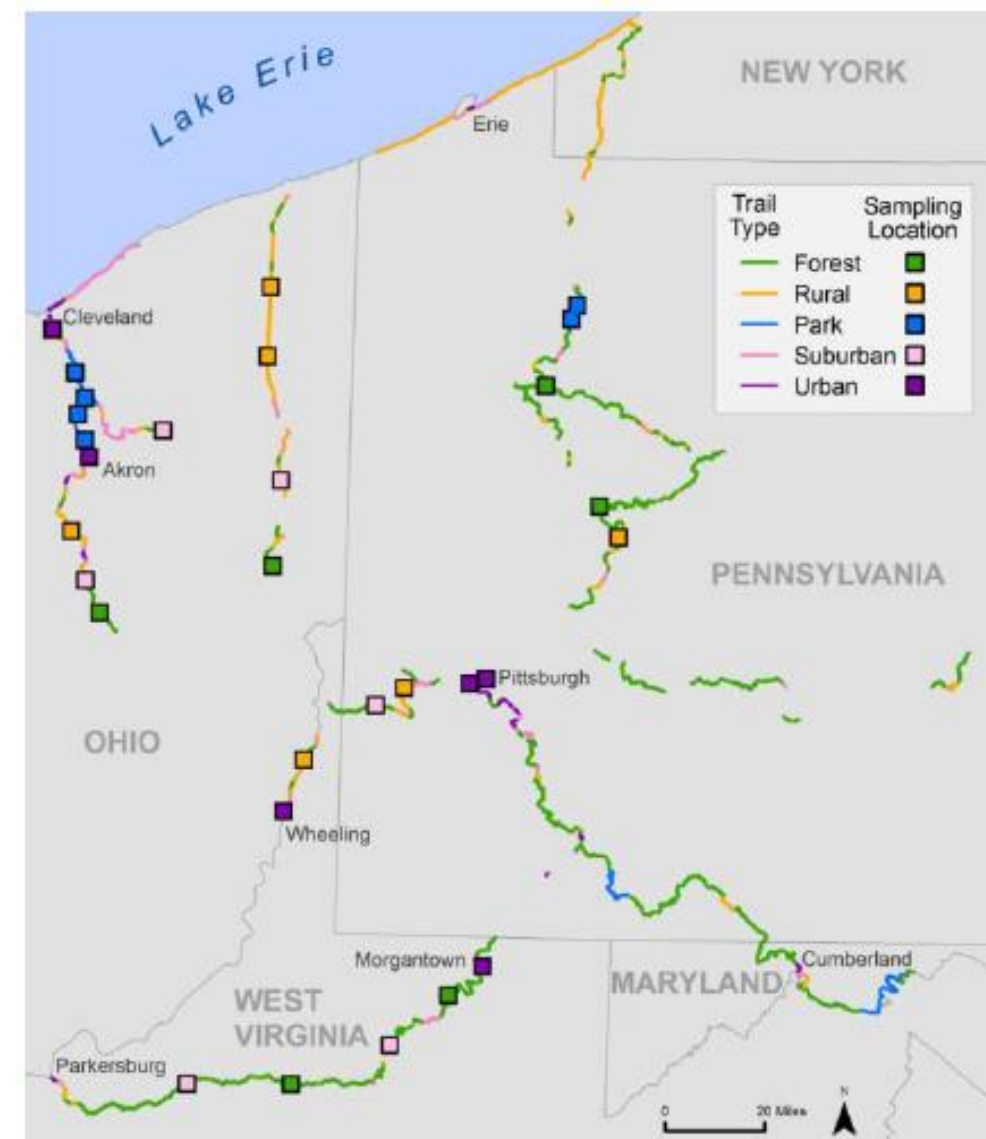
GO COUNTER

The best free traffic counting app for planners, advocates and transportation professionals.

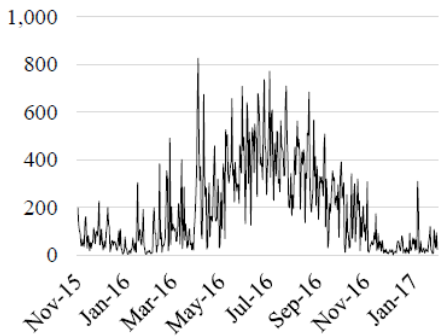


Available free—courtesy Rails-to-Trails Conservancy—Go Counter provides powerful traffic counting functionality in an easy to use app. Download on [Google Play](#), and "Go Count Your Heart Out"!

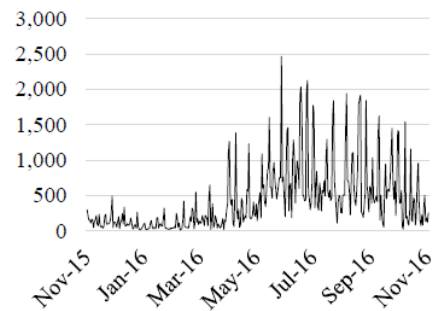
QA QC of trail data



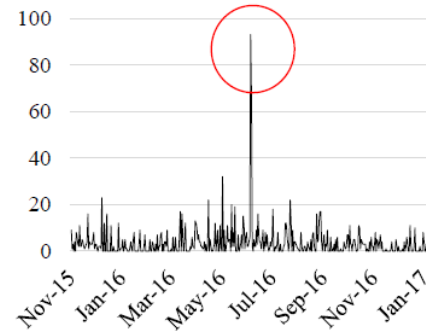
A. Normal Pattern
Suburban #12



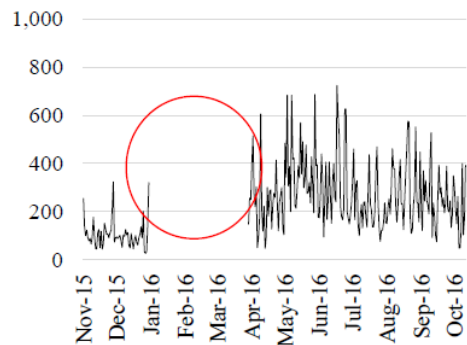
B. Normal Pattern with Greater
Variation
Parks #4



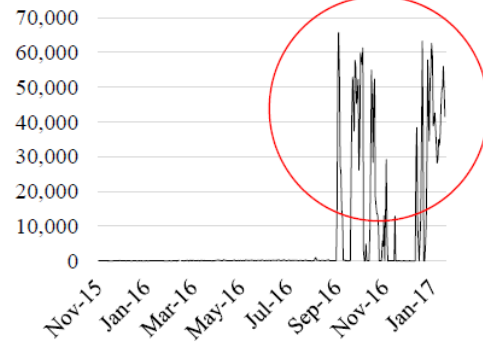
C. Outliers
Forest #28



D. Missing Days
Urban #1

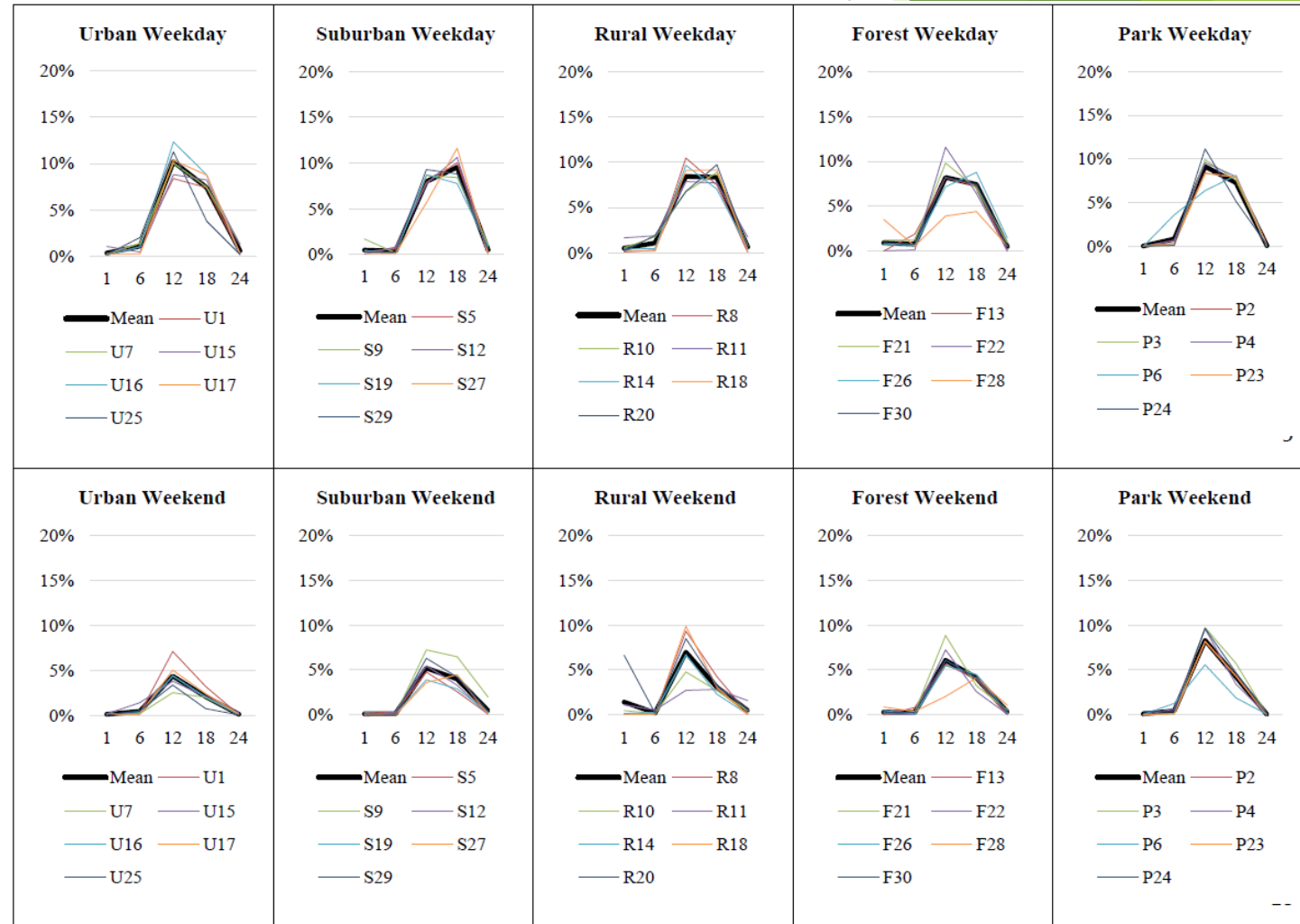
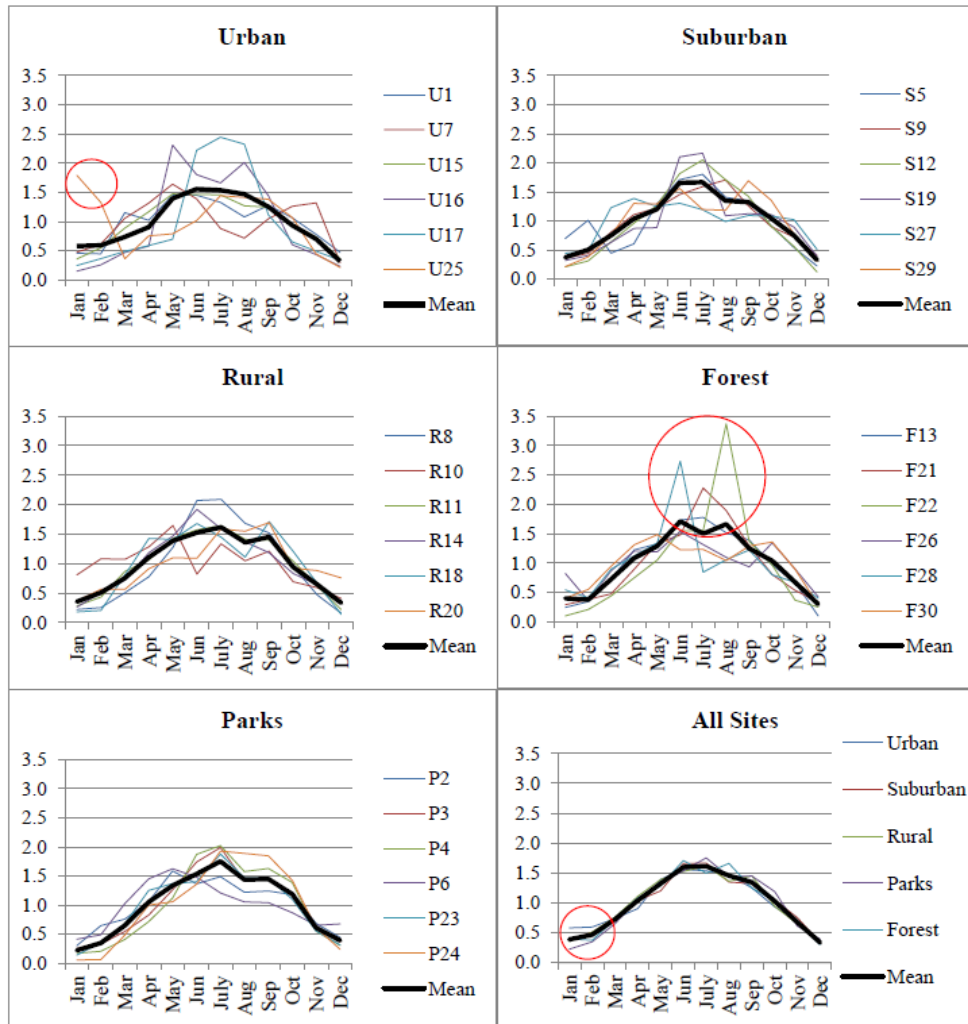


E. Counter with Errors
Suburban #9



- A. **Normal Pattern** – ADTT is 189.
- B. **Normal Pattern with Greater Variation** – Maximum daily count is 2988 while minimum daily count is 10. ADTT is 422.
- C. **Outliers** – Maximum daily count is 93 while ADTT is 4.
- D. **Missing Days** – 89 days missing from January to April. ADTT is 235.
- E. **Counter with Errors** – 21 days with counts over 50,000. ADTT is 81.

Trail Traffic by Land Use Classification



Next Phase of Trail Data Collection

- ▶ Point data to flow data
- ▶ Strava Metro data
- ▶ Correction factors
- ▶ Usage